

April Construction Updates for Fontaine Research Park

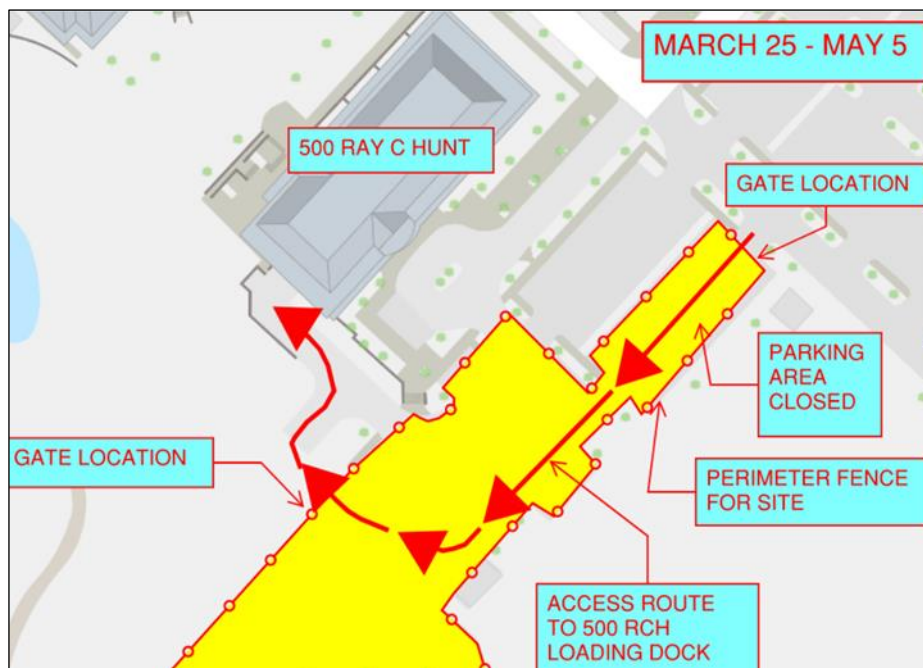
REMINDER: Please exercise caution when walking and driving around the Fontaine Research Park as there is increased construction traffic. Pedestrians should not walk in roadways. The construction teams are working to create an additional pathway connecting the 500 and 400 sides, which is planned to be completed the first week of April as noted below.

Current Projects Under Construction

Central Energy & Utilities Plant	Present – May 2026
Institute of Biotechnology	Present – June 2027
Parking Garage	March 2024 – November 2025
Roadway Infrastructure	Present – August 2024

Central Energy & Utilities Plant

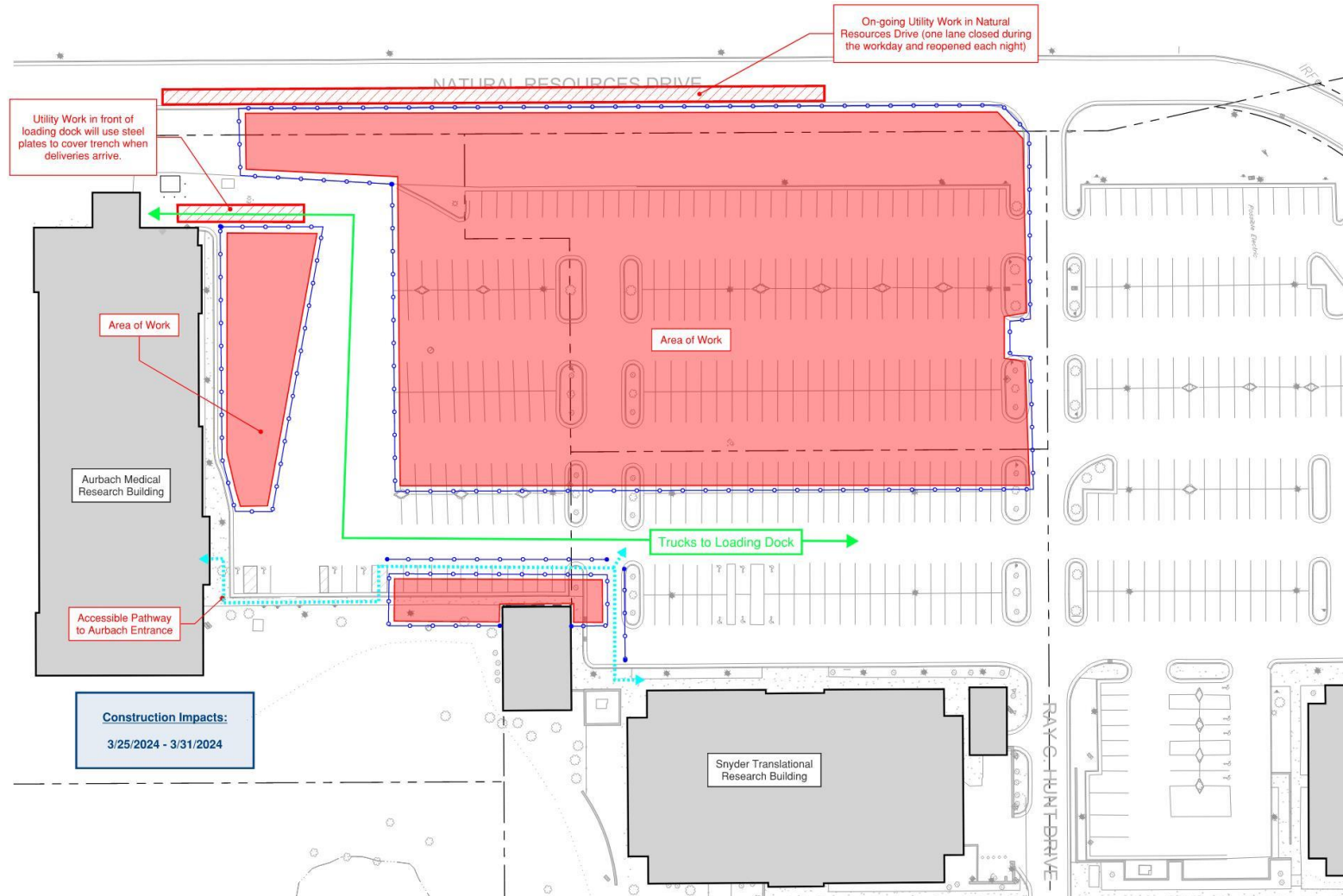
- The work within the 500 Ray C Hunt patient parking area will shift on Monday, March 25th, to the new site boundaries illustrated on the sketch below. This configuration will remain in place through the first week of May.
- During the last week of March, increased truck traffic into and out of the site can be expected as excavation and hauling begins to ramp up.
- Starting Monday, April 8th, the drilling of the geothermal wells on the site will commence. The drill rigs used in this operation will be loud, but the contractor will use the quieter model of the two types applicable to this installation to mitigate the noise as best as possible.

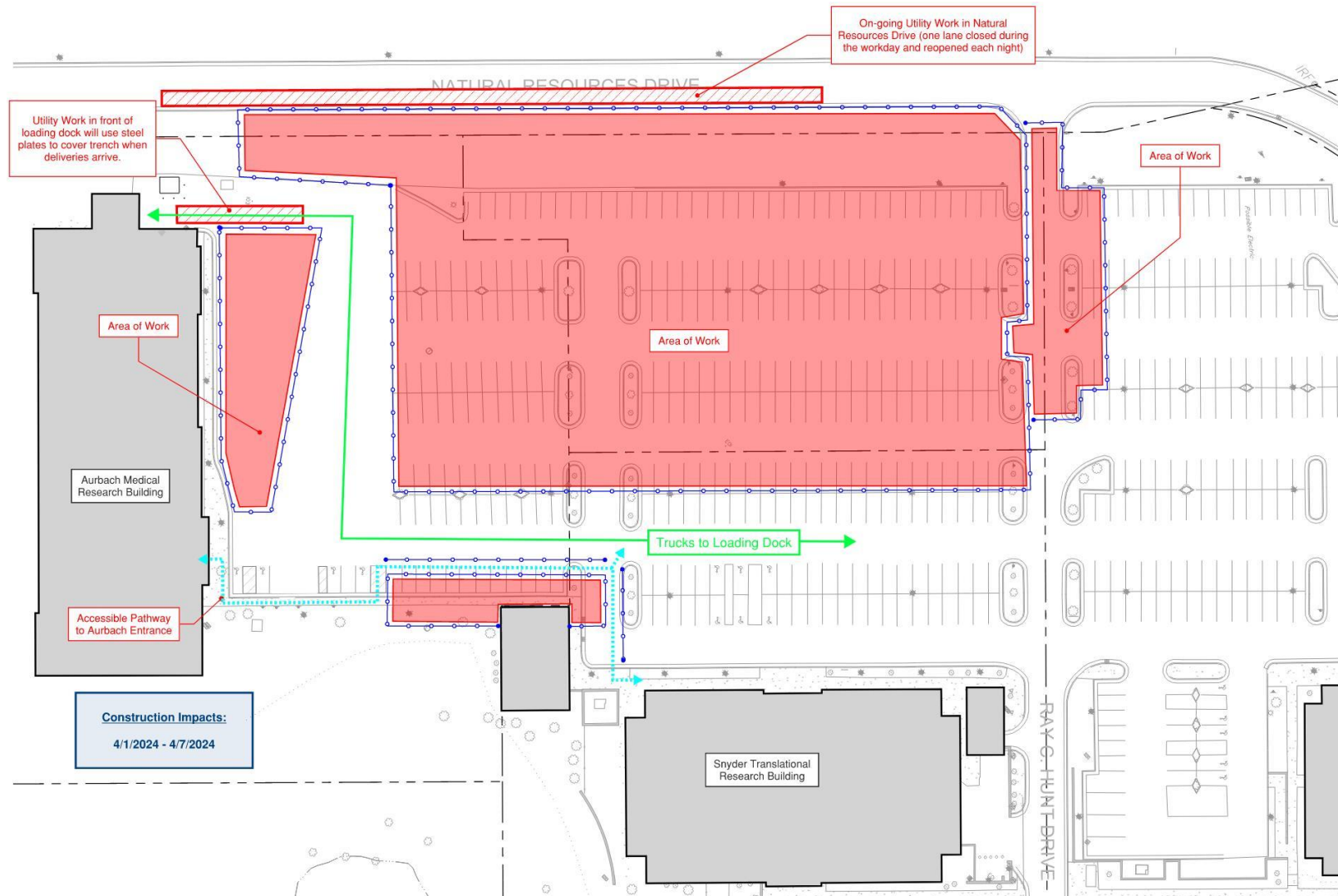


Institute of Biotechnology

- Week of 3/25/2024 - 3/31/2024
 - Line drilling will continue in preparation of rock blasting.
 - Site fencing will be adjusted East to capture parking spaces and part of the existing sidewalk to Aurbach for the installation of storm sewer utilities. The pedestrian path from Snyder to Aurbach will be detoured through a protected chute in the parking lot around the work.
 - Utility work will continue in Natural Resources Drive (with one lane closed during the workday and reopened each night).
 - Utility work near the loading dock of Aurbach will continue into the area directly in front of the loading dock. Access to the loading dock for deliveries will be maintained using steel plates across the trench whenever trucks arrive.
 - Work will begin on the Western Retaining wall along Natural Resources Drive.
- Week of 4/1/2024 - 4/7/2024
 - Site fencing will be adjusted East to capture parking spaces and part of the existing sidewalk to Aurbach for the installation of storm sewer utilities. The pedestrian path from Snyder to Aurbach will be detoured through a protected chute in the parking lot around the work.
 - Site fencing will be temporarily extended North to allow for the start of work on a new RWSA water line. A portion of Ray C Hunt Drive and some parking spaces will be closed for one week.
 - Utility work will continue in Natural Resources Drive (with one lane closed during the workday and reopened each night).
- Week of 4/8/2024 - 4/28/2024
 - Site fencing will be adjusted East to capture parking spaces and all of the existing sidewalk to Aurbach for the installation of storm sewer and other utilities. The pedestrian path from Snyder to Aurbach will be detoured through a protected chute in the parking lot around the work.
 - ADA parking for Aurbach will be relocated West to a location along the existing front sidewalk of Aurbach and new temporary curb ramps will be installed.
 - Site fencing will be temporarily extended North to allow for the start of work on a new RWSA water line. A portion of Ray C Hunt Drive and some parking spaces will be closed for one week.
 - Utility work will continue in Natural Resources Drive (with one lane closed during the workday and reopened each night).

Green arrow – delivery truck traffic, do not block. Blue arrow - pedestrian traffic between Snyder & Aurbach.





Parking Garage

- Asphalt paving is planned at the new temporary pedestrian pathway connecting the 500 to 400 side (near 415 Ray C Hunt) and at the Fontaine Research Park entrance median.
 - Paving may cause strong smells. Please reach out to FontaineConstruction@virginia.edu with any questions or concerns.
- Contractor mobilizing onsite Monday, March 25th, to capture front area at building 400 and construct sidewalk and temporary ADA parking spots in preparation for the Garage project.




Roadway Infrastructure

- Contractor continues working on utility installations, encountering rock and hoe ramming with associated noises/vibrations; median paving at FRP entry, construction of temporary pedestrian path along Ray C Hunt will provide a route from the 500 side of the park to 415; traffic controllers to be onsite starting Monday, April 1st; ***pedestrians and vehicular traffic to heed caution, go slow, and be aware of new traffic patterns, including lane narrowing, closures, etc.***

April Parking Status

Parking Impacts

April 2024

-  Patient Parking
-  Staff Parking
-  Construction Area



[Fontaine Construction Site](#)
FontaineConstruction@virginia.edu