



Facilities Management  
Capital Construction & Renovations

Leake Building | 1450 Leake Drive  
P.O. Box 400726, Charlottesville, VA 22904-4726  
(434) 982-4621 | Fax (434) 982-4628  
[www.fm.virginia.edu](http://www.fm.virginia.edu)

Date: 08/08/2025

Alert No. 2

## **NON-UVA PROJECT**

### **CONSTRUCTION ALERT** **VERVE**

#### **EMMET ST. OPENING WEDNESDAY, AUGUST 13**

**Vehicles:**

Beginning Wednesday, August 13<sup>th</sup>, the intersection of Jefferson Park Ave (JPA) and Emmet St., continuing to Stadium Rd., will be OPEN to all vehicular traffic.

**Pedestrians:** The current pathways on Stadium Rd., Emmet St. and JPA will remain in place until Q3 2027.

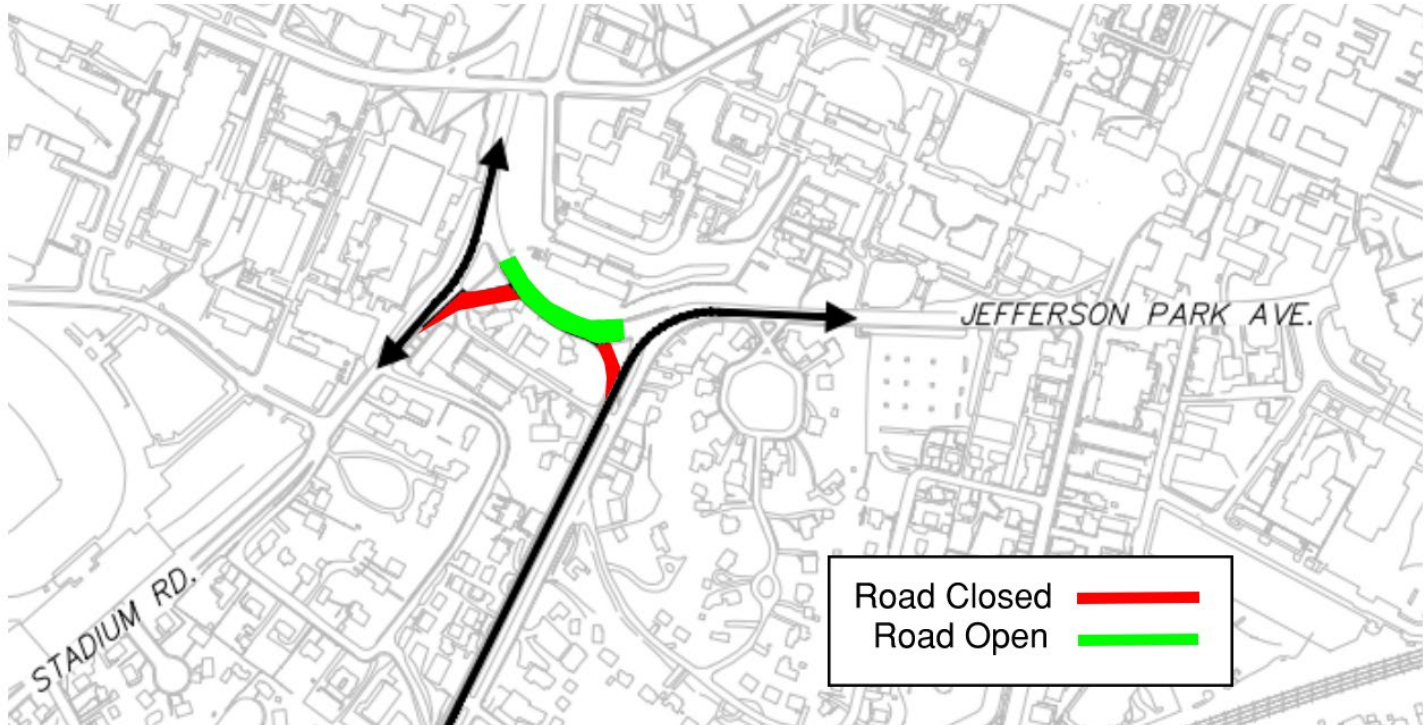
**Upcoming Vehicular Impacts:**

**In the upcoming weeks and months, southbound JPA will be modified or fully closed (24/7) to allow continued storm and sewer utility work. The specific duration and work hours are still being finalized. Once confirmed, details will be shared through construction alerts.**

**Please note:** The Verve is a residential development consisting of 1,332 beds across 463 units, with layouts ranging from studios to four-bedroom apartments. The project was developed by Subtext, with construction managed by John Moriarty and Associates (JMA). While this is not a UVA project, it is located near UVA Grounds. Due to its proximity, UVA is actively coordinating with the City of Charlottesville and the Verve project team to ensure clear communication and alignment on road and sidewalk detours.

**PHOTOS/MAPS OF AREAS AFFECTED:**

**Emmet St. Opening Wednesday, August 13**



**ISSUED BY:**

- Megan Buschi - Senior Project Coordinator  
UVA FM CC&R, [jsg5fr@virginia.edu](mailto:jsg5fr@virginia.edu) 434.400.8594
- Chris Hoy - Senior Supervisory Construction Administration  
UVA FM CC&R, [cjh6t@virginia.edu](mailto:cjh6t@virginia.edu) 434.962.5326