



Facilities Management  
Capital Construction & Renovations

Leake Building | 1450 Leake Drive  
P.O. Box 400726, Charlottesville, VA 22904-4726  
(434) 982-4621 | Fax (434) 982-4628  
[www.fm.virginia.edu](http://www.fm.virginia.edu)

Date: 25 July 2025

Alert No. 005

## **CONSTRUCTION ALERT**

North Grounds Parking Garage – Copeley Rd One Lane Traffic  
28 July to 15 August, daily, 8:00 am to 3:00 pm

### **ITEMS OF INTEREST:**

- Daily access for utility work is needed in the southbound lane of Copeley Rd between JPJ and the project site between 28 July and 15 August.
- During this time, Copeley Rd will be down to one lane from approximately 8:00 am to 3:00 pm. daily, Monday to Friday.
- Flaggers, signage and cones will be established to direct traffic and pedestrians around the closures.

### **EXIT & SIDEWALK ACCESSIBILITY**

- ☐ Work blocks existing building exits, and was reviewed with OUBO prior to blockage.
- ☒ Work blocks existing sidewalks, and was reviewed with OUBO prior to blockage.
- ☐ No impact to existing building exits and sidewalks.

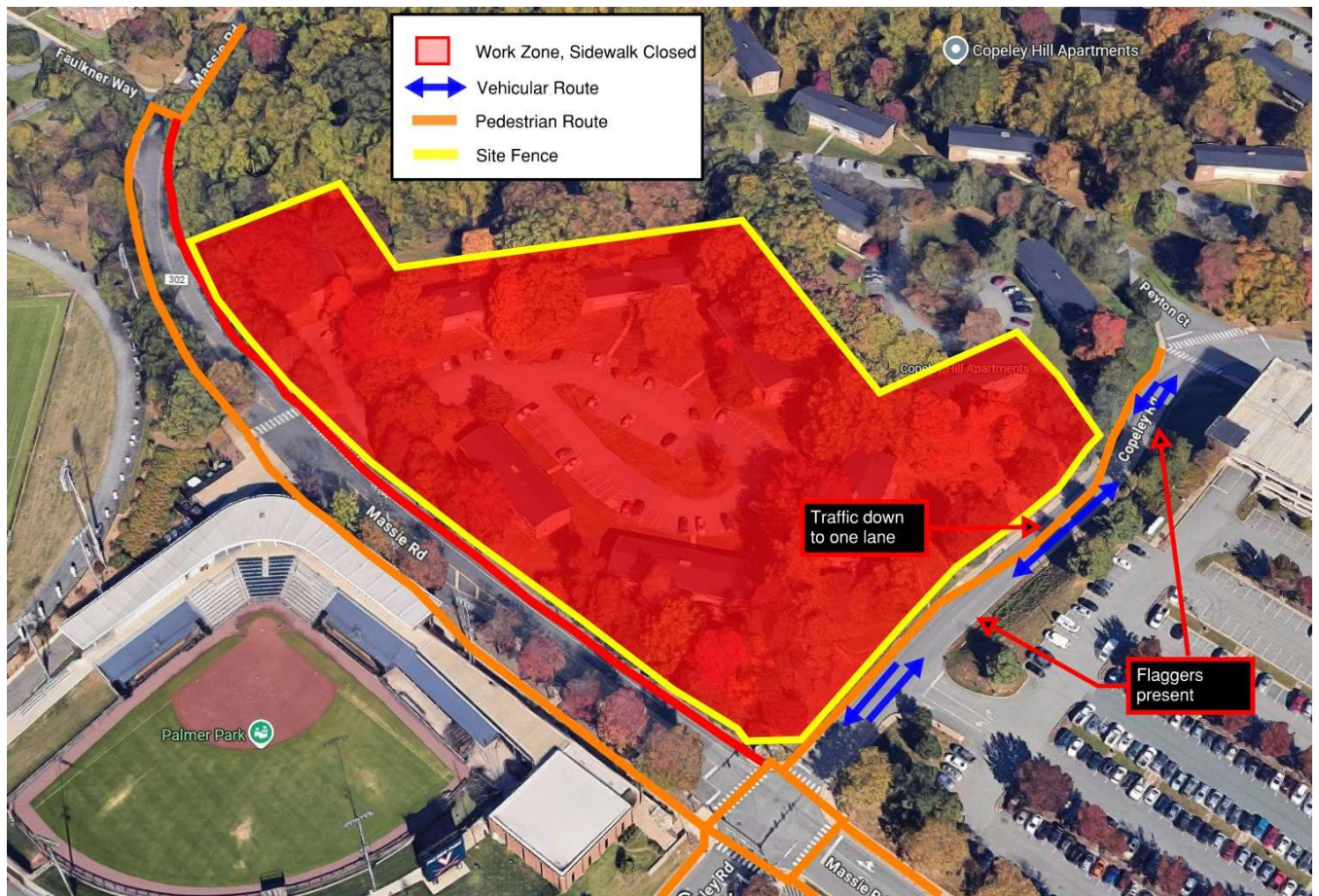
### **BACKGROUND:**

- The North Grounds Parking Garage, located on the northwest corner of Massie Rd. and Copeley Rd. across from the JPJ Arena, will serve approximately 1030 cars and have six levels. A multimodal transit hub will be located on the south side at Massie Rd. along with a large green space area. Construction started in winter 2024 and will be complete by winter 2026.

### **ISSUED BY:**

- David Sellars, Senior Construction Administration Manager - UVA FM CC&R, [des7n@virginia.edu](mailto:des7n@virginia.edu), 540.520.0040
- Kit Meyer, Construction Project Director - UVA FM CC&R, [ksm2g@virginia.edu](mailto:ksm2g@virginia.edu), 434.531.7094

**PHOTOS/MAPS OF AREAS AFFECTED:**



END OF ALERT