



Facilities Management  
Capital Construction & Renovations

Leake Building | 1450 Leake Drive  
P.O. Box 400726, Charlottesville, VA 22904-4726  
(434) 982-4621 | Fax (434) 982-4628  
[www.fm.virginia.edu](http://www.fm.virginia.edu)

Date: 4 -23-2025

Alert No. 1

## **CONSTRUCTION ALERT**

### **McCormick Road-Chapel Triangle Improvements**

#### **ITEMS OF INTEREST:**

- The McCormick Road Chapel Triangle Improvements project construction will begin on **May 19<sup>th</sup>, 2025**, and is anticipated to be completed on **July 18<sup>th</sup>, 2025**.
- Construction will require a Roadway Closure to all through traffic, except for Emergency Vehicles. Adjacent roadway to the south will accommodate UVA FM and other University and Special Events Vehicles as required.
- Vehicular Detour, and Alternate Pedestrian Paths, as well as Relocated ADA Parking Spaces will be provided. Additionally, the Garrett Trolley stop will be offline and the McCormick Trolley stop will be relocated to University Avenue near the Rotunda for the duration on construction.

#### **EXIT & SIDEWALK ACCESSIBILITY**

- ☐ Work blocks existing building exits and was reviewed with OUBO prior to blockage.
- ☒ Work blocks existing sidewalks and was reviewed with OUBO prior to blockage.
- ☐ No impact to existing building exits and sidewalks.

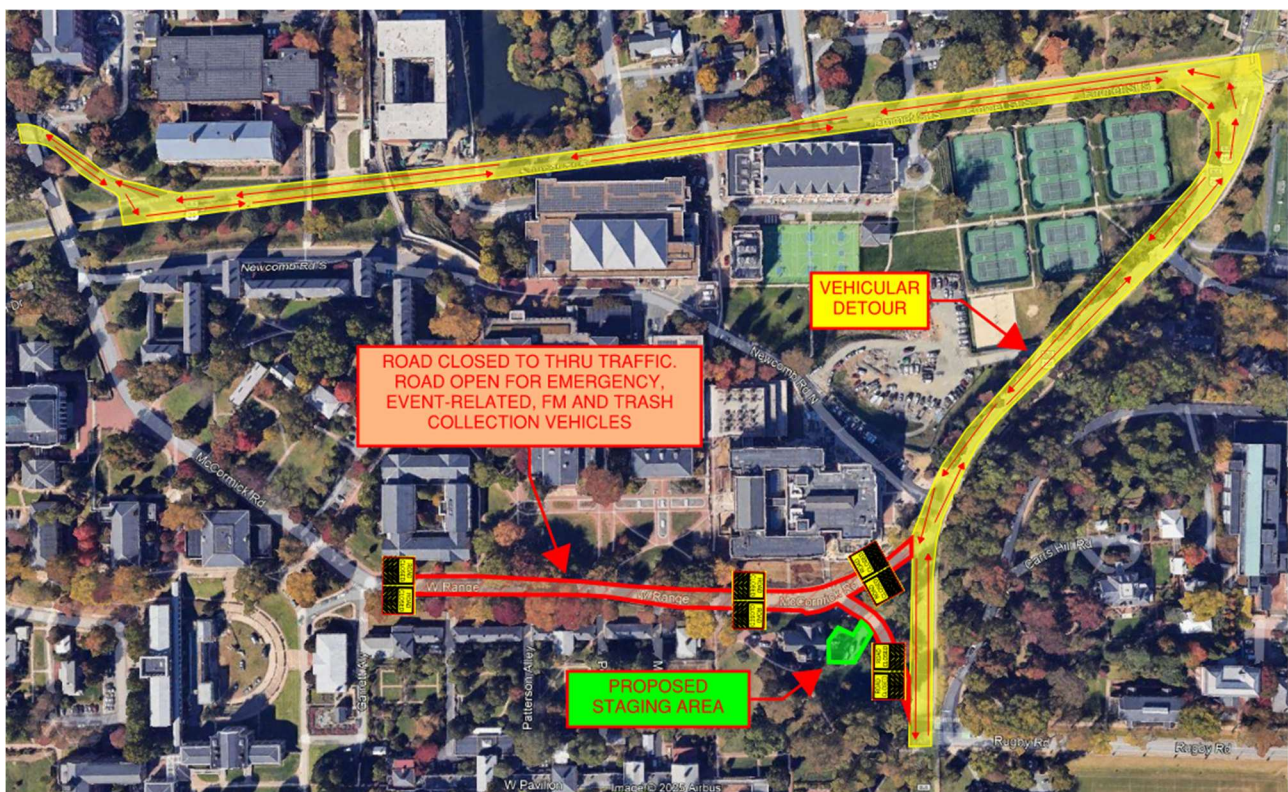
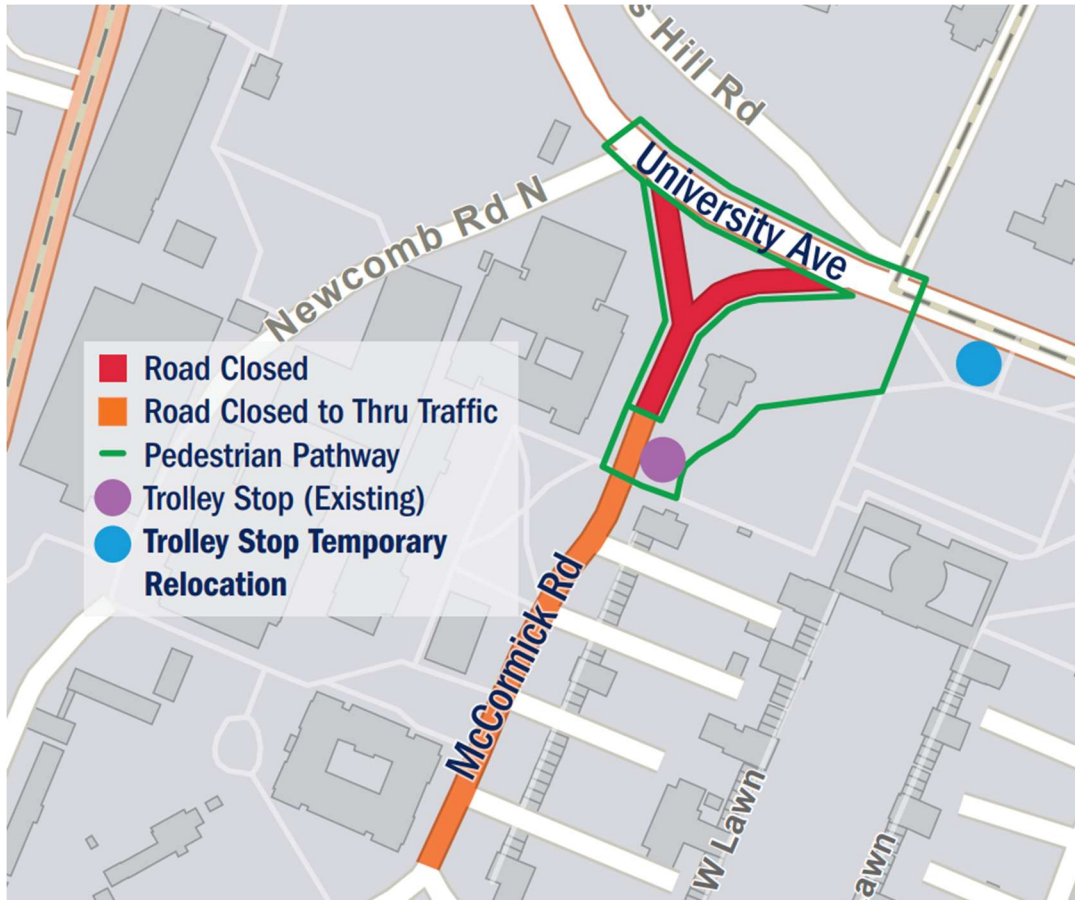
#### **BACKGROUND:**

- Vehicular and pedestrian safety and access will be improved by slowing incoming traffic, reducing through traffic, and providing better bike access and safer pedestrian crossings. Infrastructure for vehicular access control gates will be installed for potential future use.

#### **ISSUED BY:**

- Amy Eichenberger, Project Manager, [ace8a@virginia.edu](mailto:ace8a@virginia.edu), (434)-466-8252
- Megan Buschi, Senior Project Coordinator, [jsg5fr@virginia.edu](mailto:jsg5fr@virginia.edu), (434)-400-8594
- Jordan Campbell Project Coordinator, [ukg6wt@virginia.edu](mailto:ukg6wt@virginia.edu), (434)-987-7753

**PHOTOS/MAPS OF AREAS AFFECTED:**





**Legend:**

-  Relocated ADA Temporary Parking Spaces During Construction