



Facilities Management
Capital Construction & Renovations

Leake Building | 1450 Leake Drive
P.O. Box 400726, Charlottesville, VA 22904-4726
(434) 982-4621 | Fax (434) 982-4628
www.fm.virginia.edu

Date: July 17, 2025

Alert No. 22

CONSTRUCTION ALERT

McIntire New Academic Facility – JPA Night Work between Brandon Intersection and Breeden Way

ITEMS OF INTEREST:

- The McIntire Cobb/Shumway project will be milling, paving, and striping during the overnight hours starting the evening of Sunday, July 20. The work will continue every night until complete on or about Wednesday, July 23. The work will be performed in coordination with the City of Charlottesville. Work in JPA will be performed from the new drive apron at Breeden Way to the Brandon Avenue intersection to tie-in the new drive aprons and curbing. The final top coat will also be installed at the new Shumway Hall loading dock. The traffic lanes of Jefferson Park Avenue will be impacted and traffic controls will be in place to accommodate two-way traffic at all times. Flaggers will manage conflicts between construction equipment, pedestrians, and vehicular traffic.
- Timeline:
 - Sunday, July 20 – Wednesday, July 23
9:00 pm- 5:00 am: Work in the JPA traffic lanes. Two-way traffic will be maintained. Pedestrian traffic will need to obey flaggers and temporary detour signage.
- Impacts to Jefferson Park Avenue (JPA) traffic will be limited as much as possible. Flaggers will be staged at each end of the project site.
- Any incoming ambulances or other emergency vehicles will be given priority over these project-related operations.

EXIT & SIDEWALK ACCESSIBILITY

- ☐ Work blocks existing building exits and was reviewed with OUBO prior to blockage.
- ☐ Work blocks existing sidewalks and was reviewed with OUBO prior to blockage.
- ☒ No impact to existing building exits and sidewalks.

BACKGROUND:

- The McIntire School of Commerce is expanding its academic facilities on the site of Cobb Hall. The historic north block of Cobb Hall, facing Hospital Drive, will be preserved and renovated. The rear wings will be demolished and replaced with a 75,000 sf new building that responds to Rouss/Robertson Hall and JPA. The project is scheduled for completion in Spring 25.

ISSUED BY:

- Craig Hilten, Senior Project Manager, CC&R, chilten@virginia.edu
c 434.981.8781
- Charlotte Dickerson, Construction Administration Manager, CC&R, clp5s@virginia.edu
c. 434-964-6532

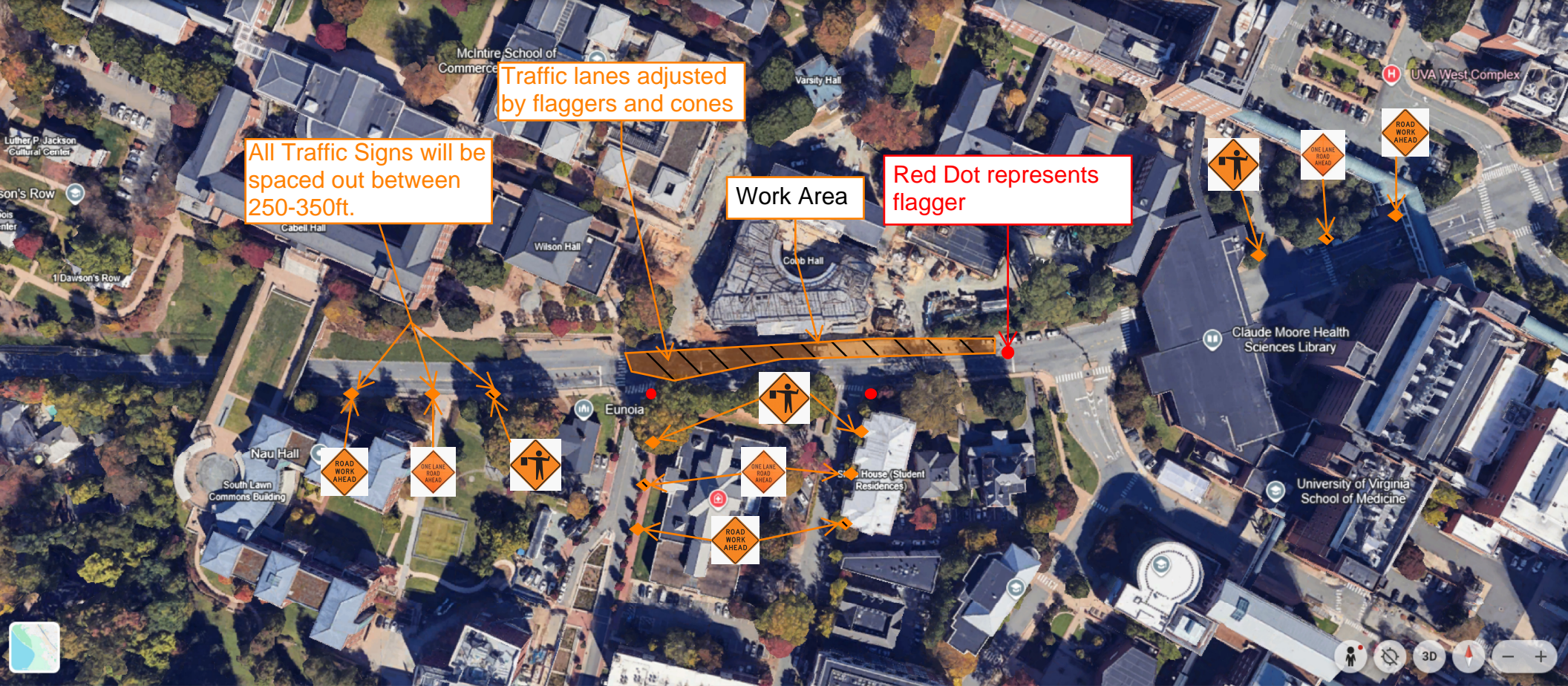
PHOTOS/MAPS OF AREAS AFFECTED:

- See attached.

END OF ALERT



= Area Impacted by Overnight Milling-Paving-Striping Operations



Traffic Control Plan