



Facilities Management
Capital Construction & Renovations

Leake Building | 1450 Leake Drive
P.O. Box 400726, Charlottesville, VA 22904-4726
(434) 982-4621 | Fax (434) 982-4628
www.fm.virginia.edu

Date: May 13, 2025

Alert No. 1

CONSTRUCTION ALERT

Non-UVA Project

Hereford Drive Road Closure

RWSA 36" Raw Water Main

ITEMS OF INTEREST:

A portion of Hereford Drive will **be closed** from **May 27th to July 31st**. A detour will be marked.

EXIT & SIDEWALK ACCESSIBILITY

- ☐ Work blocks existing building exits, and was reviewed with OUBO prior to blockage.
- ☐ Work blocks existing sidewalks, and was reviewed with OUBO prior to blockage.
- ☒ No impact to existing building exits and sidewalks.

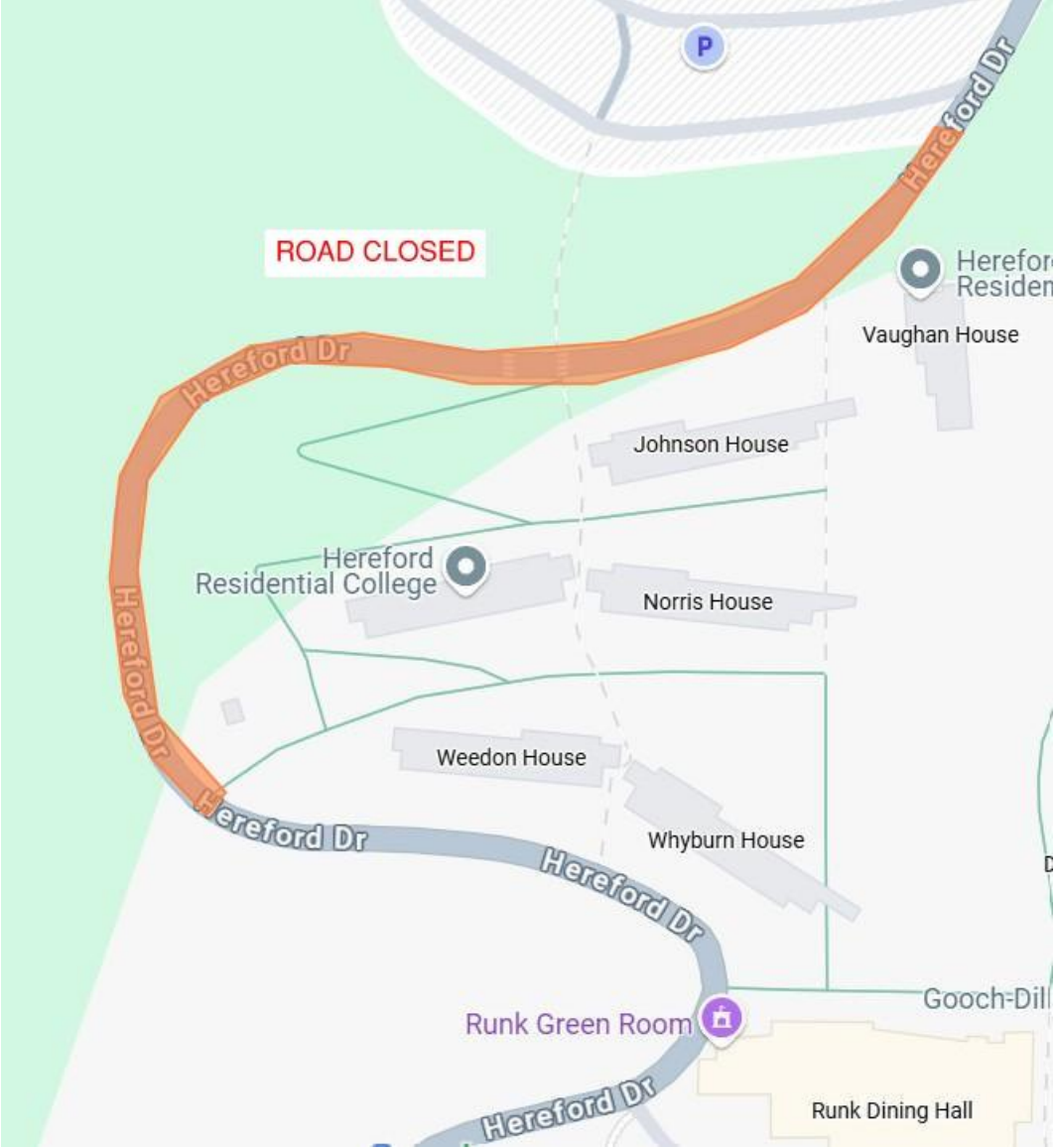
BACKGROUND:

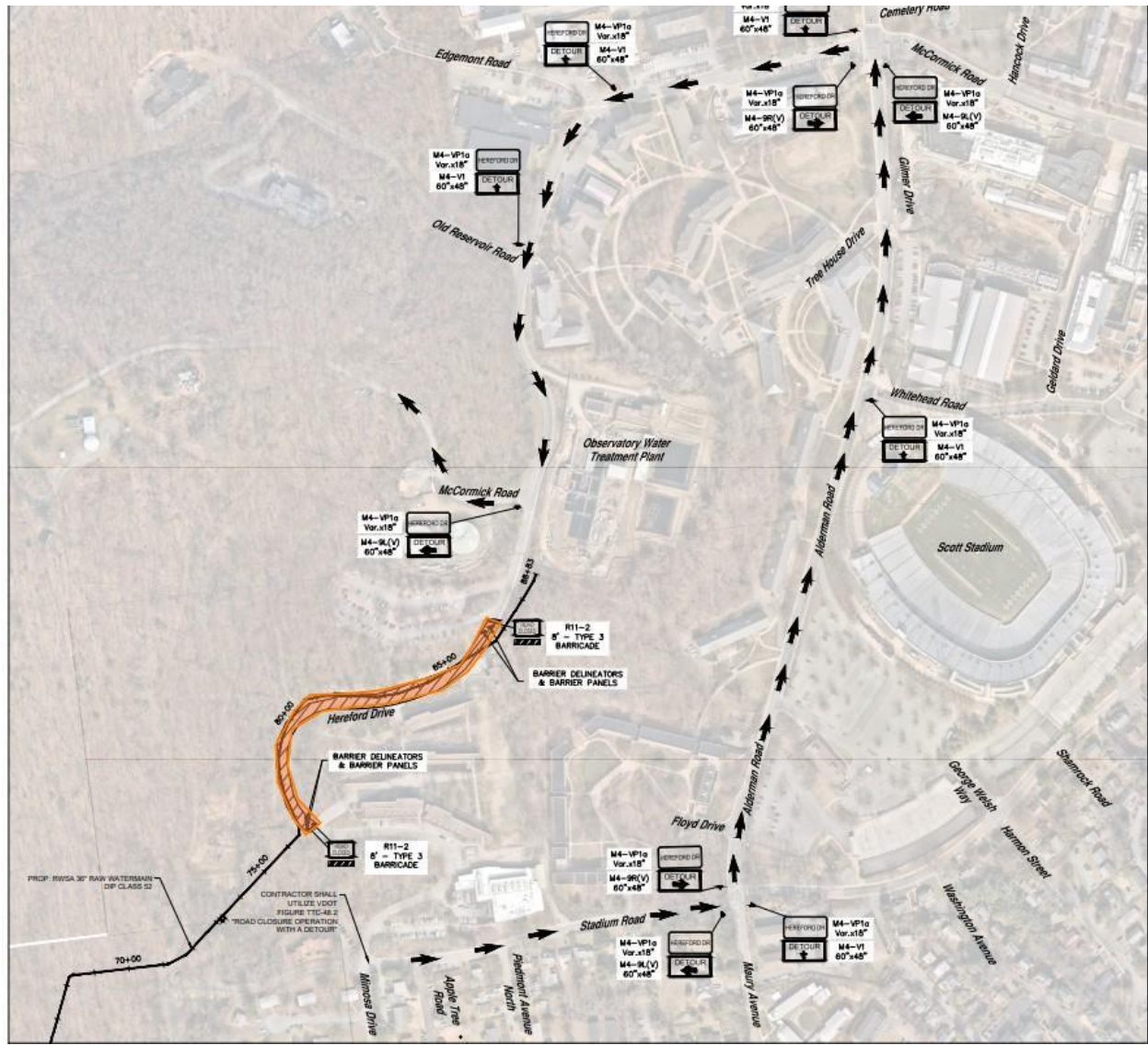
- The Ragged Mountain Reservoir to Observatory Water Treatment Plant Raw Water Line will span approximately 4 miles, between Ragged Mountain Reservoir and Observatory Water Treatment Plant, including a spur-piece of piping that will be installed on the Foxhaven Farm property, connecting the Ragged Mountain Raw Water Pump Station (RMRWPS) to the Southern end of the previously installed raw water line under the Birdwood Golf Course. All piping installed will be 36-inch in diameter, and the Ragged Mountain Raw Water Pump Station will have the capacity to initially transfer up to 10 million gallons per day (MGD) of raw water from Ragged Mountain Reservoir to Observatory Water Treatment Plant

ISSUED BY:

- **Caitlin Murtaugh**, Project Manager, Capital Construction and Renovations, cm8nf@virginia.edu, 434.906.3075

PHOTOS/MAPS OF AREAS AFFECTED:





END OF ALERT