



Date: July 14, 2025

Alert No. 03

CONSTRUCTION ALERT
FONTAINE RESEARCH PARK
ROADWAY INFRASTRUCTURE PROJECT

ITEMS OF INTEREST:

- Starting Monday, July 21, 2025, the contractor will mobilize to start the demolition of the asphalt median at the Fontaine Research Park entrance. After the demolition is complete, a section of the new concrete curb median will be installed. See Exhibit 1 on page 2, area of work shown in yellow.
- Starting Monday, July 28, 2025, the contractor will start the demolition of the concrete curb and gutter at the Fontaine Research Park entrance. After the demolition is complete, a new sidewalk will be installed. See Exhibit 1 on page 2, area of work shown in blue.
- This work is scheduled to be completed on or around Friday, August 15, 2025.
- Traffic signage and traffic channelizing devices will direct vehicular traffic during work activities. Flagmen will also be present to direct vehicular traffic during unloading and loading.
- Lane reductions and closures will be minimized as much as possible. All lane impacts will be fully opened at the end of each day.
- There will be typical construction equipment noise associated with this work.
- Dates are subject to weather impacts and other unforeseen conditions. This construction alert will be revised accordingly.
- All means of egress from adjacent buildings will be maintained during construction.

EXIT & SIDEWALK ACCESSIBILITY

- ☐ Work blocks existing building exits, and was reviewed with OUBO prior to blockage.
- ☐ Work blocks existing sidewalks, and was reviewed with OUBO prior to blockage.
- ☒ No impact to existing building exits and sidewalks. (The existing sidewalk will be impacted intermittently to make the tie-in of the new sidewalk at the SW corner of 560 Ray C Hunt)

BACKGROUND:

The Fontaine Research Park Roadway Infrastructure project addresses the 2018 Fontaine Master Plan's recommendations for near-term construction of transportation connections, associated with additional parking (being provided as part of separate Fontaine Research Park Parking Garage project). The recently completed Fontaine Infrastructure and Parking Garage Study verified the Master Plan's recommendation that the most appropriate internal intersection control is a roundabout. This project will include a reconfigured Fontaine Research Park entrance and new roundabout to improve entry and egress to the research park, as well as a new central spine connector to improve access throughout the research park.

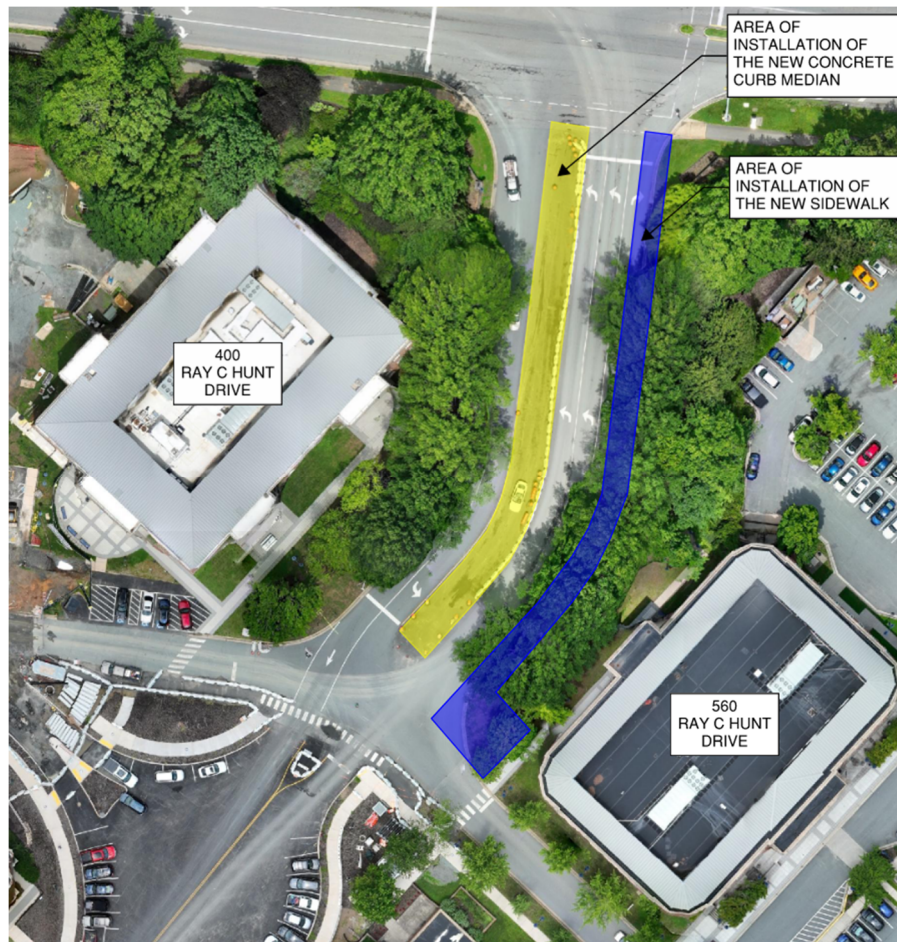
ISSUED BY:

Taryn Spence | Sr. Project Mgr. | CC&R | tsh2n@virginia.edu | 434-872-3154

Sam Walker | Construction Admin Mgr | CC&R | slw7a@virginia.edu | 434-270-9392

PHOTOS/MAPS OF AREAS AFFECTED:

Exhibit 1



END OF ALERT