



Date: March 17, 2025

Alert No. 08

CONSTRUCTION ALERT
**FONTAINE RESEARCH PARK
PARKING GARAGE PROJECT**

ITEMS OF INTEREST:

- In support of the Fontaine Research Park Parking Garage Project, the contractor will fully capture a section of Ray C Hunt Drive running parallel to the garage on Monday, March 24, 2025 to start the installation of wet utilities. See Exhibit 1 on page 2, area of work shown in red. This work is scheduled to be completed by mid-July 2025.
- All vehicular traffic needing access to the 400 side of Fontaine Research Park will be detoured through Spine Road and directed to turn right to access the 415, 450 and 480 Ray C Hunt Drive buildings. See Exhibit 1 on page 2, ingress vehicular traffic shown in yellow.
- All vehicular traffic leaving the 400 side of Fontaine Research Park will be detoured through Spine Road and directed to Fontaine Avenue. See Exhibit 1 on page 2, egress vehicular traffic shown in blue.
- UVA wayfinding and construction detour signage will be installed to help users navigate the Fontaine Research Park.
- ADA parking, an area for service vehicles and an area for loading/unloading activities associated with the 400 Ray C Hunt Drive building will remain open and fully accessible during the road closure.
- Pedestrians will use the temporary pedestrian pathway to traverse the Fontaine Research Park. Note the revised pathway. See Exhibit 2 on page 3, pathway shown in yellow.
- There will be typical construction equipment noise associated with this work including the use of a hydraulic rock hammer to excavate rock for the installation of the wet utilities.
- Flaggers will be present to direct vehicular traffic as required during this work.
- All building means of egress will be maintained during construction.

EXIT & SIDEWALK ACCESSIBILITY

- ☐ Work blocks existing building exits, and was reviewed with OUBO prior to blockage.
- ☐ Work blocks existing sidewalks, and was reviewed with OUBO prior to blockage.
- ☒ No impact to existing building exits and sidewalks.

BACKGROUND:

- The project consists of constructing a new parking garage adjacent to 400 Ray C Hunt to meet the parking needs of the Fontaine Research Park. The new parking garage will be seven (7) levels including a partially below grade level with a speed ramp for the approximately 1,250 parking spaces. The construction completion is expected to be Fall 2025.

ISSUED BY:

Taryn Spence | Sr. Project Mgr. | CC&R | tsh2n@virginia.edu | 434-872-3154

Sam Walker | Construction Admin Mgr | CC&R | slw7a@virginia.edu | 434-270-9392

PHOTOS/MAPS OF AREAS AFFECTED:

Exhibit 1

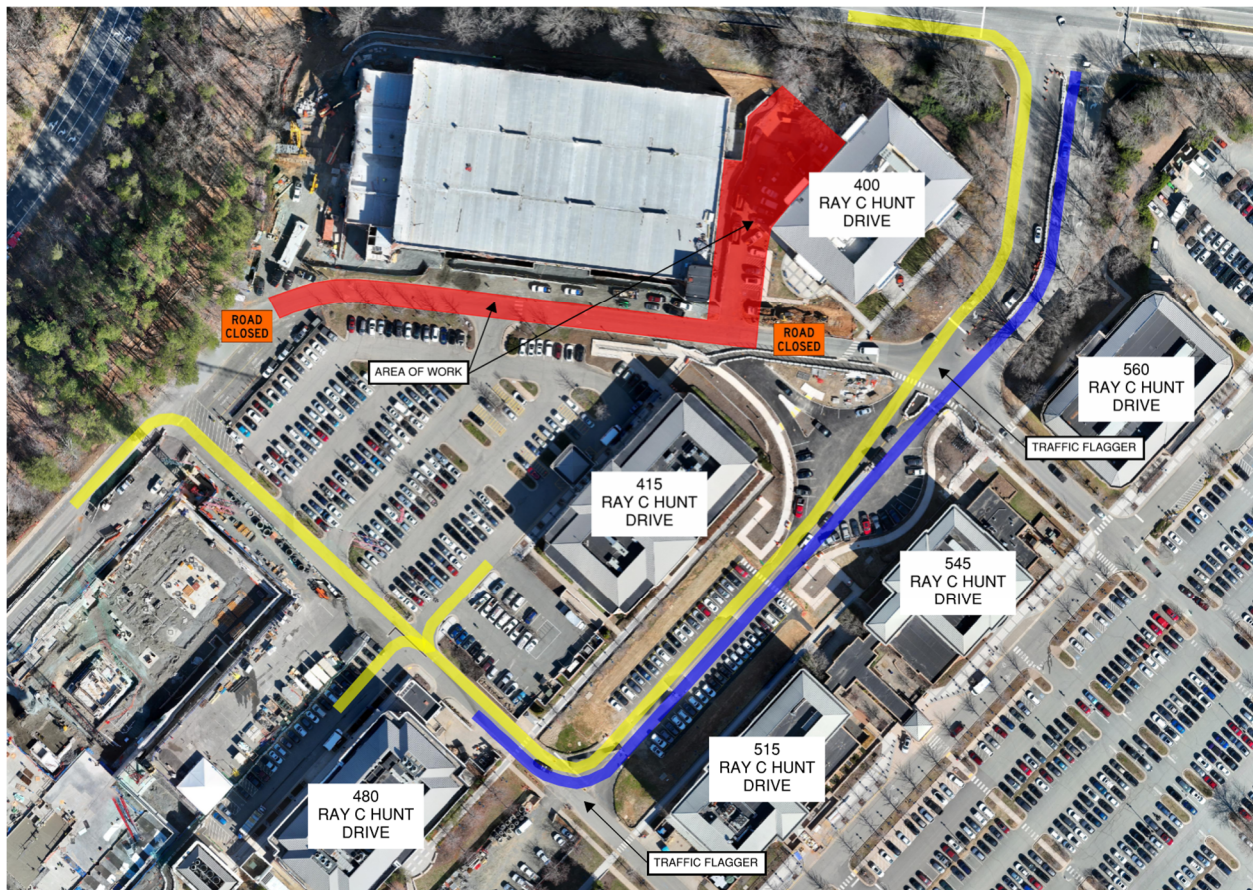
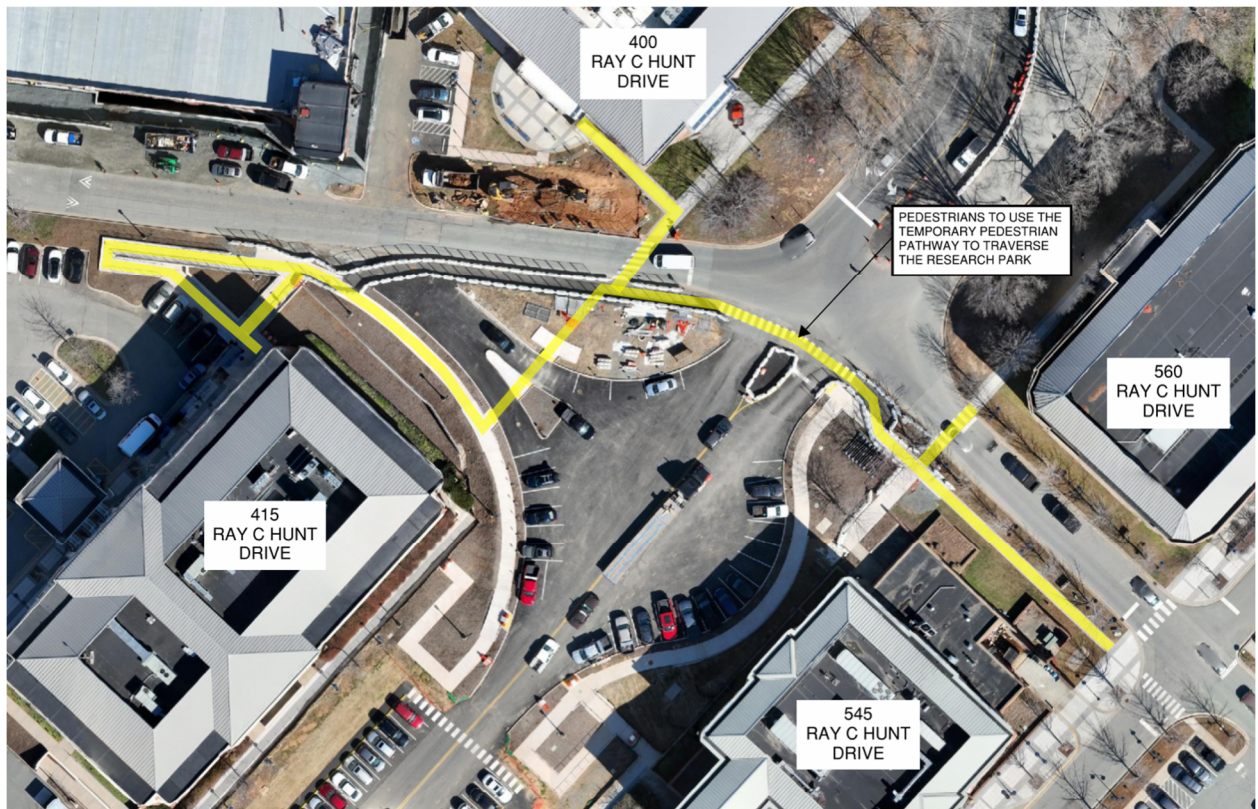


Exhibit 2



END OF ALERT