



Date: April 21, 2025

Alert No. 4

CONSTRUCTION ALERT

Fontaine Central Energy Plant

BACKGROUND:

- The Fontaine Central Energy Plant will be UVA's first fossil fuel-free plant. It will initially support the new Manning Institute for Biotechnology but will eventually provide service to the entire Fontaine Park.
- The generator for the plant and the enclosure for the generator are scheduled to be delivered on **Friday May 2nd**. This equipment will be delivered on two oversized tractor-trailers, each truck approximately 110' long by 14' wide.
- Preparation, delivery and install of the generator and enclosure will cause disruptions and modifications to traffic and parking within Fontaine Research Park beginning **Friday, May 2nd thru Saturday, May 3rd**.

ITEMS OF INTEREST:

- The **morning of Friday May 2nd** eight parking spaces in front of the east side of 515 Ray C Hunt will be closed until approximately 12 pm to make room for a 550-ton crane and support tractor trailers to maneuver into the FCEP jobsite.
- **Friday May 2nd** all parking in the spine road traffic circle (contractor/construction parking) will have to be vacated by 12 pm. The two oversized tractor trailers will arrive to the park in the afternoon. As each tractor trailer makes their way into the entrance of the park, traffic will be shifted and will be stopped at times until the tractor trailers make their way to the entrance of Spine Road into the traffic circle area. State Police will be on site to assist with traffic control at the Fontaine Avenue/Research Park entrance stop light. The trucks/equipment will remain staged in this area overnight until they are ready for install the following morning.
- **Friday evening at the end of the day** an entire row of parking spaces that spans from 560 Ray C Hunt to 500 will be closed and will remain closed until the following evening of **Saturday May 3rd**.
- **Saturday May 3rd** the two oversized tractor trailers carrying the generator and enclosure will back out of the spine road traffic circle area and make their way to FCEP jobsite. The crane will unload the trucks and set the equipment into place. All parking will be reopened before the end of the day.

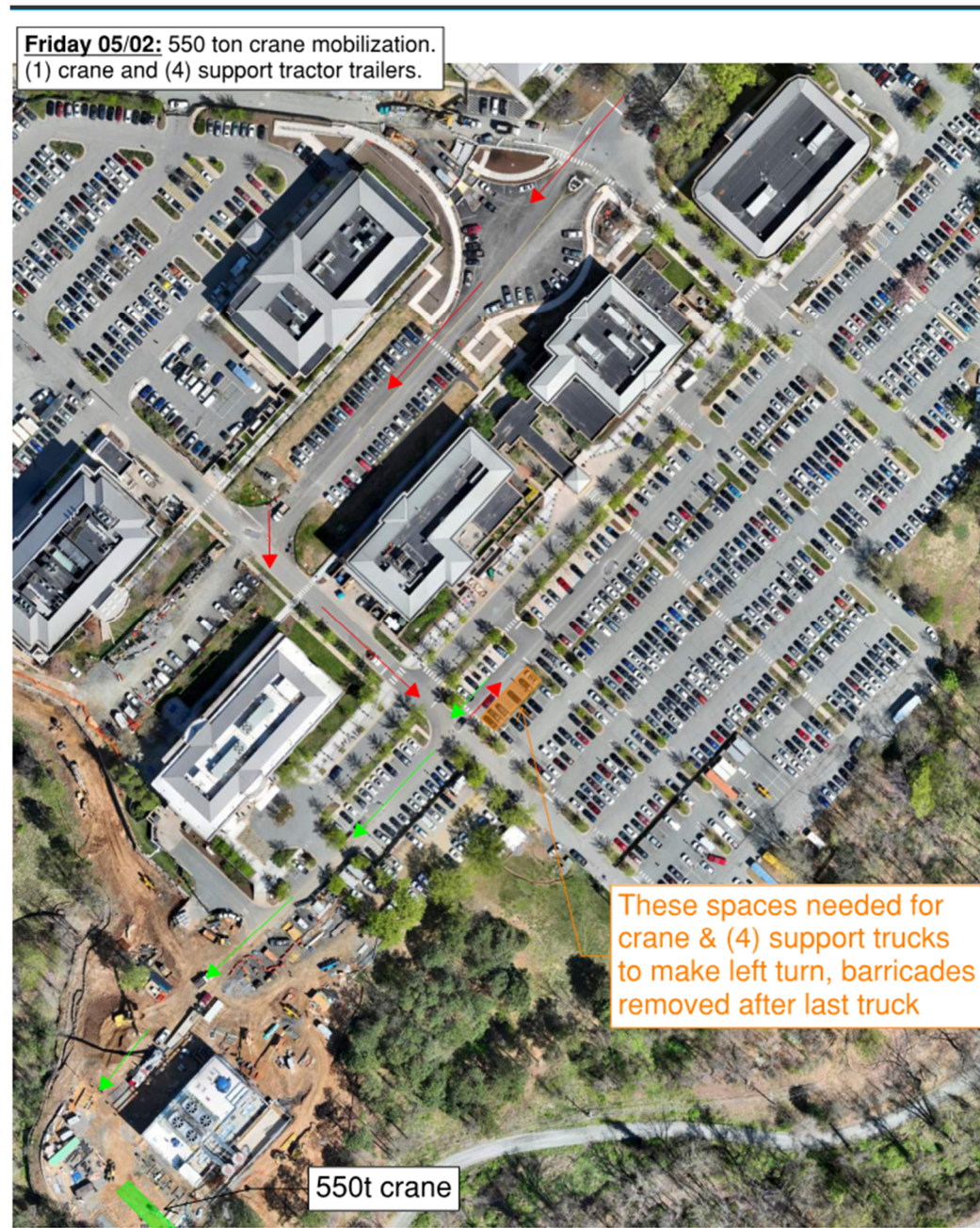
For more information, please visit the Fontaine Research Park FM Construction page <https://www.fm.virginia.edu/depts/fpc/projects/active/fontaine/index.html>

ISSUED BY:

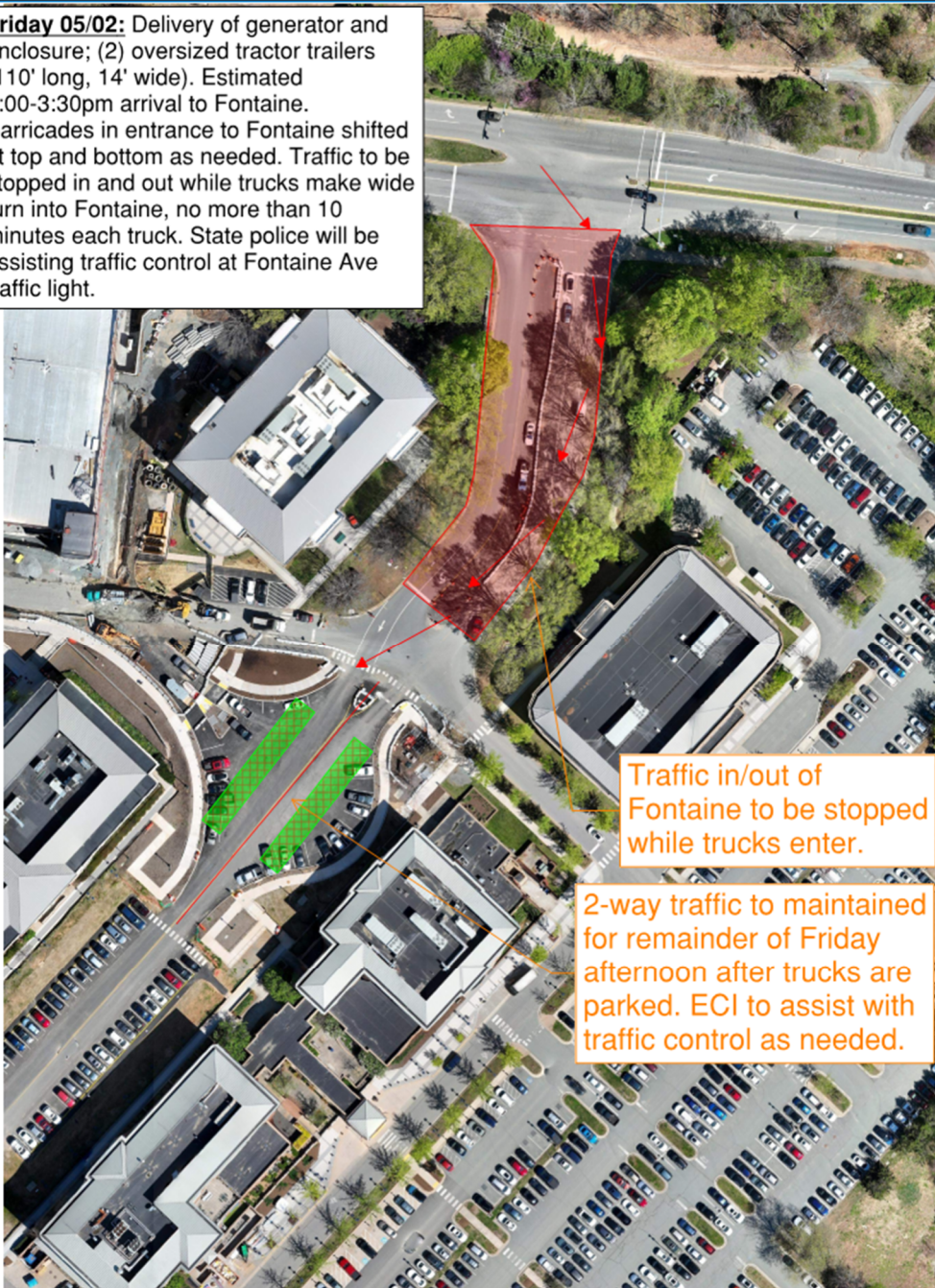
Dustin Watson, Construction Manager – UVA FM CC&R, dmw9w@virginia.edu, 434-906-6903

Chris Pouncey, Project Manager – UVA FM CC&R, cp2xa@virginia.edu, 434-981-3159

PHOTOS/MAPS OF AREAS AFFECTED:



Friday 05/02: Delivery of generator and enclosure; (2) oversized tractor trailers (110' long, 14' wide). Estimated 2:00-3:30pm arrival to Fontaine. Barricades in entrance to Fontaine shifted at top and bottom as needed. Traffic to be stopped in and out while trucks make wide turn into Fontaine, no more than 10 minutes each truck. State police will be assisting traffic control at Fontaine Ave traffic light.



Traffic in/out of Fontaine to be stopped while trucks enter.

2-way traffic to maintained for remainder of Friday afternoon after trucks are parked. ECI to assist with traffic control as needed.

Saturday 05/03: (2) tractor trailers move from Spine Road to FCEP Site. Traffic in/out of Fontaine to be stopped while trucks back out of Spine Rd. Plan is to start moving trucks at 5am on Saturday morning.



Parking spaces taken all day on Saturday 05/03. Barricades set up Friday evening.

END OF ALERT