



Date: December 11, 2024

CONSTRUCTION ALERT

Fontaine Central Energy Plant

BACKGROUND:

- The Fontaine Central Energy Plant will be UVA's first fossil fuel-free plant. It will initially support the new Manning Institute for Biotechnology but will eventually provide service to the entire Fontaine Park.
- Two of the major components of the operation of this plant are two Thermal Energy Storage Tanks that are 50 ft. tall, and each will be delivered on tractor trailers that are 110 ft. in length from front of the truck to the end of the trailer. These trucks are scheduled to arrive **Monday, December 23, 2024**.
- Preparation, delivery and install of these tanks will cause numerous disruptions and modifications to traffic, parking and pedestrian travel beginning **Saturday, December 21, 2024 thru Sunday, December 29, 2024**.

ITEMS OF INTEREST:

- **Saturday December 21 and Sunday December 22** two cranes will arrive to the park and will maneuver their way to the Fontaine Plant site. The cranes and material required for setup will be delivered on 14-17 tractor trailers. 30 parking spaces in front of 500 Ray C Hunt will be closed all weekend.
- **Monday December 23** the 110 ft. long tractor trailers with the tanks will arrive to the park. As each tractor trailer makes their way into the entrance of the park, traffic will be shifted and will be stopped at times until the tractor trailers make their way to the entrance of Spine Road in the new traffic circle. The trucks/tanks will remain staged in this area until they are ready for install.
- **Tuesday December 24** an entire row of parking spaces that spans from 560 Ray C Hunt to 500 will be closed at the end of the day and will remain closed until end of the day **Friday December 27**.
- **Thursday December 26** one of the tractor trailers with the tanks will back out of spine road and temporarily block the entrance to the research park. The tractor trailer will maneuver to the east side of 560 Ray C Hunt and then back down the drive aisle toward the Fontaine Plant site. The tank will be unloaded and then the tractor trailer will exit the park.

- **Friday December 27** the remaining tractor trailer will repeat the same process the first tractor trailer did the previous day. The truck will back out of spine road and temporarily block the entrance to the research park. The tractor trailer will maneuver to the east side of 560 Ray C Hunt and then back down the drive aisle toward the Fontaine Plant site. The tank will be unloaded and then the tractor trailer will exit the park.
- **Saturday December 28 and Sunday December 29** demobilization of the larger of the two cranes will take place and 30 parking spaces in front 500 Ray C Hunt will need to be closed once again. These parking spaces will be re-opened before the end of the day Sunday.
- **For more information, please visit the Fontaine Research Park FM Construction page** <https://www.fm.virginia.edu/depts/fpc/projects/active/fontaine/index.html>

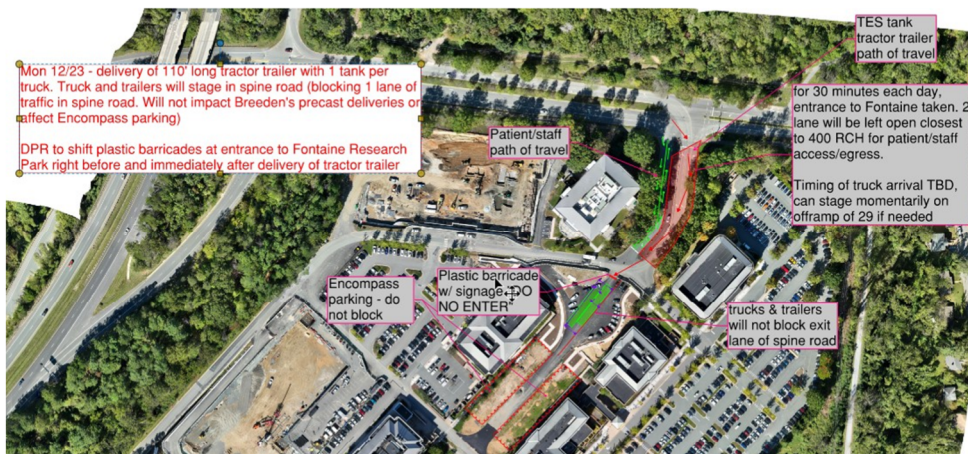
ISSUED BY:

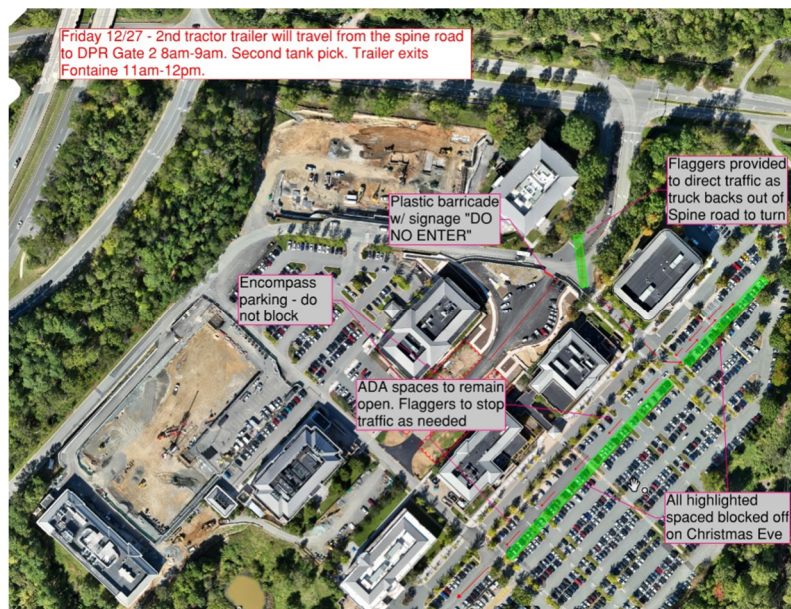
Dustin Watson, Construction Manager – UVA FM CC&R, dmw9w@virginia.edu, 434-906-6903

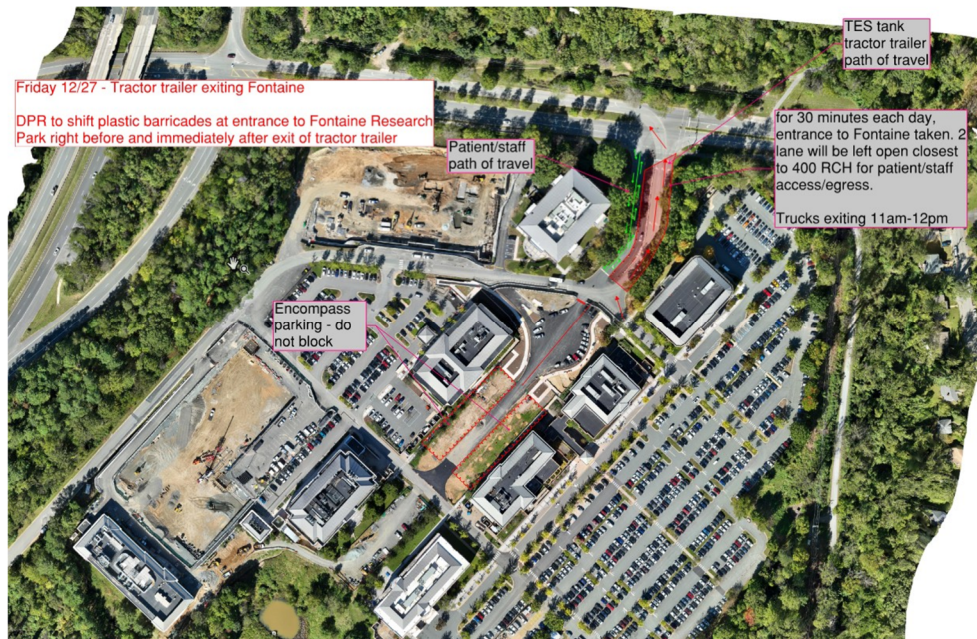
Chris Pouncey, Project Manager – UVA FM CC&R, cp2xa@virginia.edu, 434-981-3159

SEE PHOTOS NEXT PAGE

PHOTOS/MAPS OF AREAS AFFECTED:







END OF ALERT