

Emmet-Ivy Garage Construction Alert

We're ahead of schedule!

**Starting Monday, August 8 and lasting
*about 3 weeks:***

**Vehicles must ENTER the garage from
Emmet Street.**

**The vehicular entry from Ivy Road will be closed.
Vehicles must exit the garage toward Ivy Road.
The vehicular exit to Emmet Street will be closed.**

QR then click
construction
alerts/resources
for more details



Date: 08/04/2022

Alert No. 052

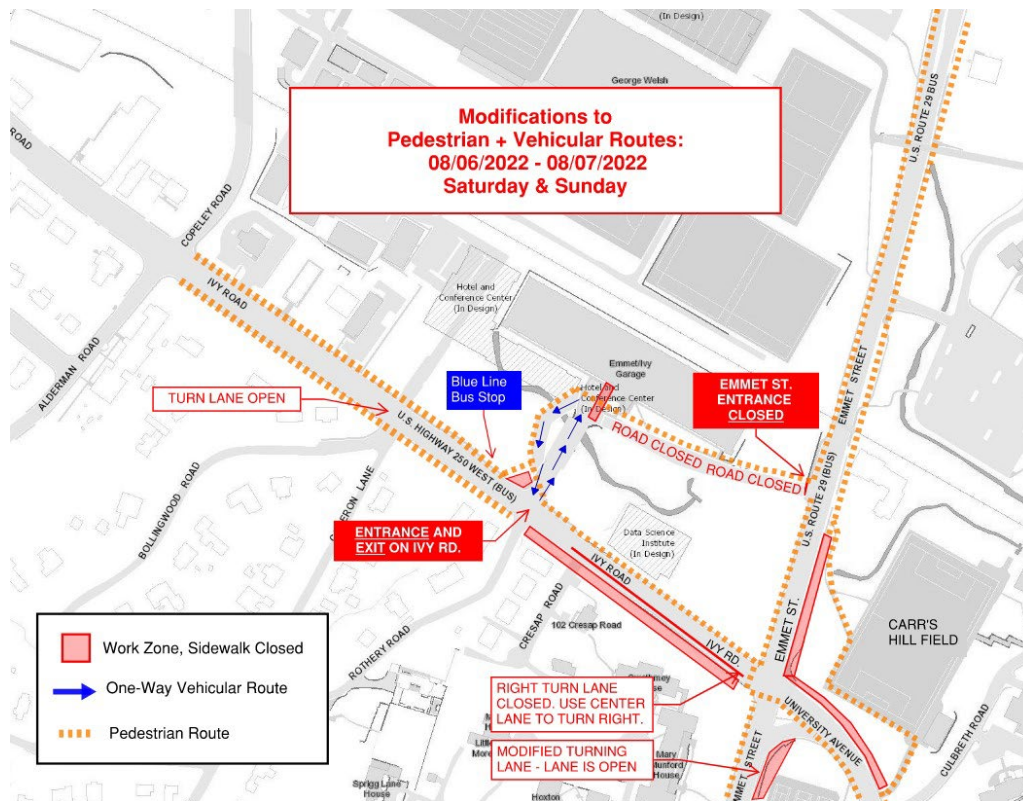
CONSTRUCTION ALERT

Emmet-Ivy Corridor Public Realm Project
Saturday, August 6th - Friday, August 12th

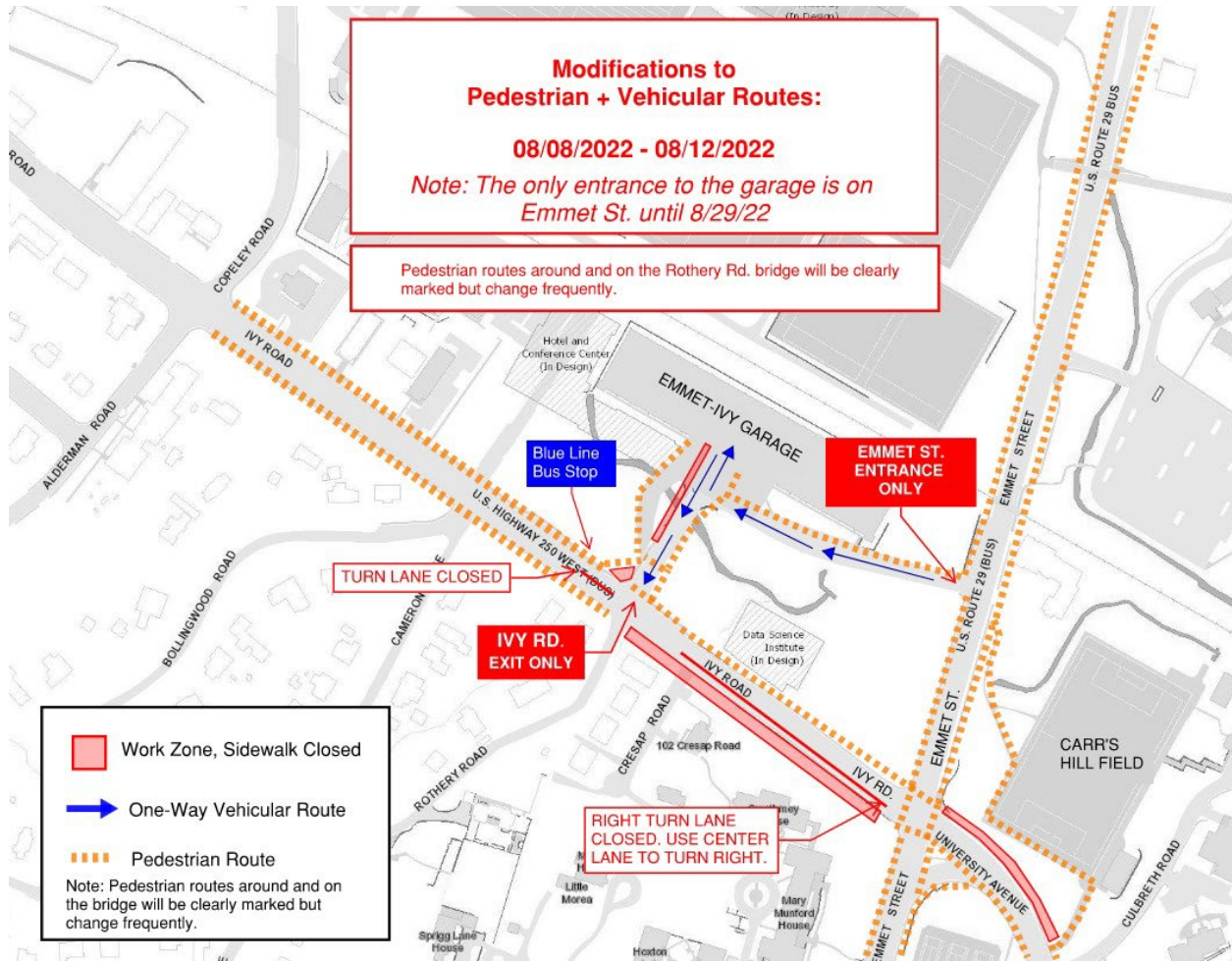
WHAT'S THE LATEST CHANGE?

Vehicles: Starting Monday, August 8th the only entrance to the garage is from Emmet St. the only exit is on Ivy Rd.

Pedestrians: Starting Monday, August 8th the routes around and on the Rothery Rd. bridge will be clearly marked but change frequently.



Continue



VEHICLES:

- **Vehicles: Starting, Monday August 8th the only entrance to the garage is from Emmet St. the only exit is on Ivy Rd.**
- **Vehicles:** The southbound turning lane on Ivy Rd. is closed (day and night). Use the center lane to turn right onto Emmet St.
- **Vehicles:** The Ivy Rd. eastbound turning lane into the garage is closed from August 8th - August 29th.
- **Vehicles:** The eastbound turning lane onto University Ave is modified until Monday, August 8th.

Continue

PEDESTRIANS

The pedestrian routes around the Rothery Rd. bridge will be clearly marked but change frequently.

- **Pedestrians:** The sidewalk along the south side of Ivy Rd. is closed and the north side is open. The sidewalk along the north side of Ivy Rd. from Copley Rd to the Blue Line bus stop is open. Follow the pedestrian route to continue eastbound on the north side of Ivy Rd. sidewalk.
- **Pedestrians:** the sidewalk along the north side of University Ave. from the Emmet-Ivy intersection to the Carr's Hill Field access road is closed. The sidewalk on the south side of University Ave is open.
- **Pedestrians:** The pedestrian route from Emmet-Ivy Garage to Central Grounds is to take the new road (around the bridge or across the bridge) to Ivy Rd. or Rothery Rd. to Emmet St. and University Ave.
- **Pedestrians:** The pedestrian route from Emmet/Ivy Garage to Lambeth/JPJ/Barracks Rd. takes Rothery Rd. to the west side of Emmet St.
- **Pedestrians:** The pedestrian route from Lambeth to Central Grounds is to take the sidewalk along the east side of Emmet St. and around the Carr's Hill Field path to University Ave.

ISSUED BY:

- Chris Hoy, Construction Administration Manager - UVA FM CC&R, cjh6t@virginia.edu , 434.962.5326
- Nat Perkins, Project Manager - UVA Foundation, nperkins@uvafoundation.com , 434.531.7387
- Megan Buschi - Project Coordinator - UVA FM CC&R, jsg5fr@virginia.edu 434.400.8594

BACKGROUND:

- This project provides civil and utility infrastructure to support the development of Phase 1 of the new Ivy Corridor District. The first two buildings to be built within the district are the School of Data Science and the UVA Hotel and Conference Center.

END OF ALERT