

Date: 11.29.2021

Alert No. 02E

CONSTRUCTION ALERT
BRANDON AVENUE UPPER CLASS HOUSING II PROJECT
Phase 01 (fifth extension) and transition to Phase 02

ITEMS OF INTEREST:

- Gibson Hall loading dock and Bice House original fire lane access road underground site utility work.
- The Bice House temporary emergency access road ramp transition is complete and the original access road will be taken out of service as Phase 02.
- ADA parking will remain open at the parking lot adjacent to the Historic Foster Site.
- Allowing ADA, Emergency, Waste Management and Food Service access to Gibson Hall loading dock entrances are critical during this period. The area of access will have multiple steel plates for vehicle and pedestrian passage support at the areas of work. ADA passage will never be closed but intermittently rerouted with signage and barricade fencing as protection.

SCHEDULE of IMPACT:

- Phase 01 (extended and shown in brown): 07.19.2021 through 12.24.2021 (revised from 11.03.2021)
- Phase 02a, 2b & 2c: 11.29.2021 through 1.31.2021

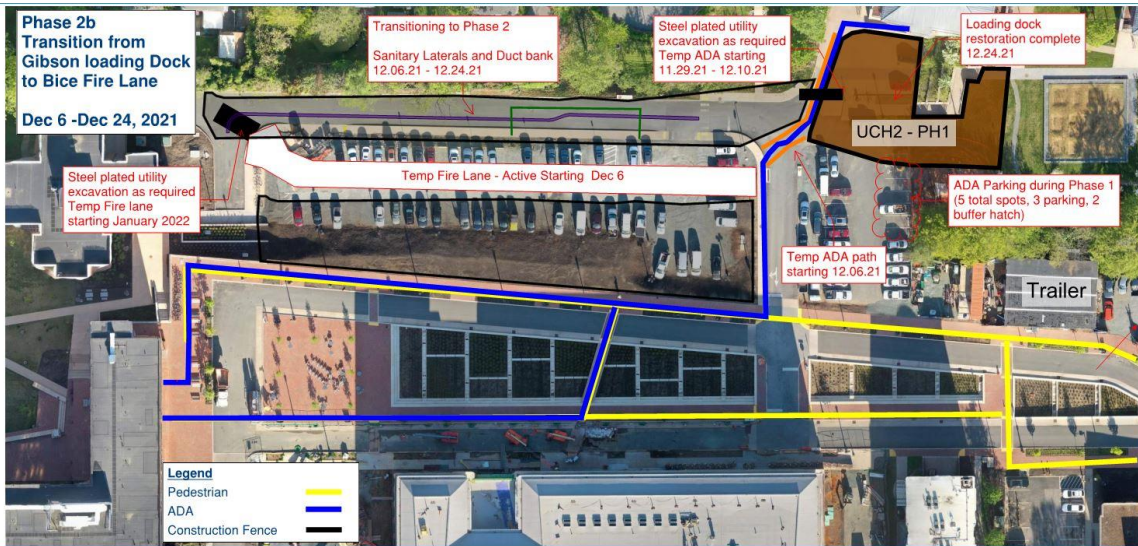
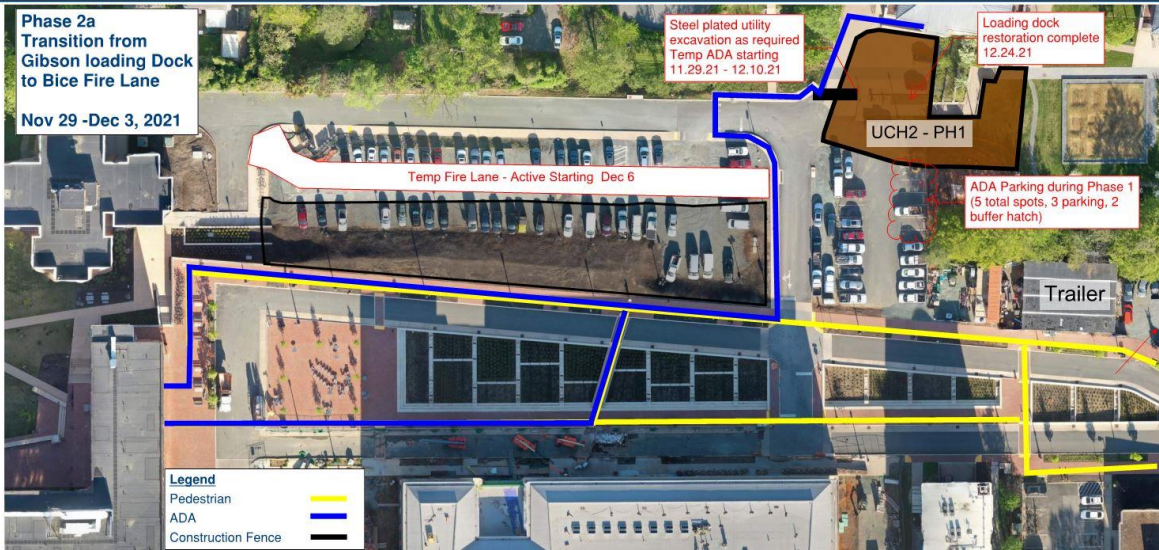
BACKGROUND:

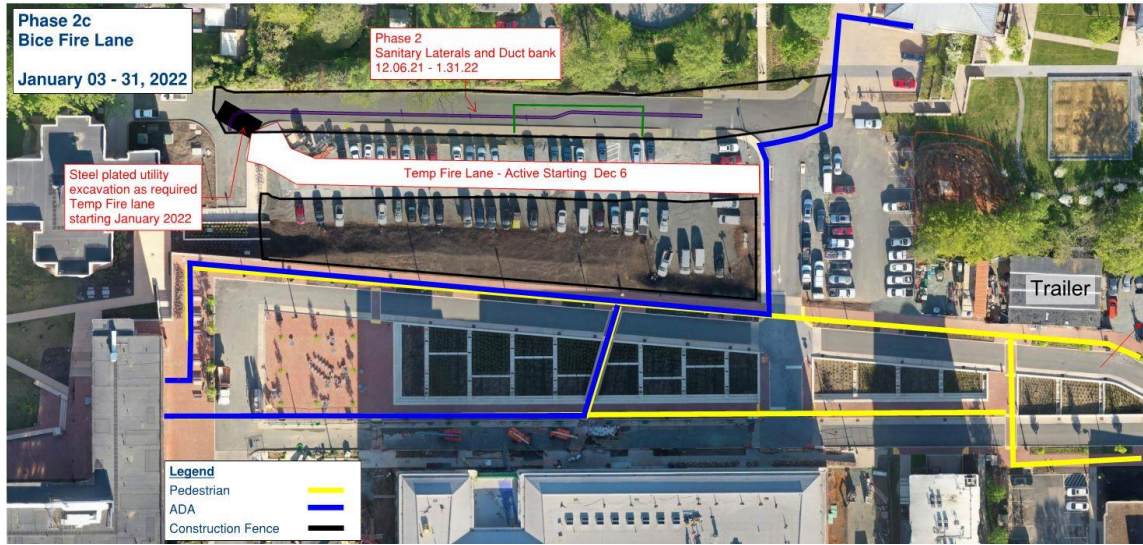
- The Brandon Avenue Upper Class Housing II Project will construct two residential buildings positioned on surface level parking lots along the west side of Brandon Avenue. Prior to the start of construction for the buildings underground utility installation will occur in two parts, Phase 01 and Phase 02. This Alert No. 02E, Phase 01 extended will include continued excavation and underground utility work at the Gibson Hall loading dock area and Phase 02, Bice House original fire access road utility work.

Issued by and Points of Contact:

- Brian Williams, Project Manager, CC&R, gbw5r@virginia.edu, c 434.962.3692
- Amanda Farmer, Sr. Construction Manager, CC&R, af5qc@virginia.edu, c 434.566.2736

MAP OF AREAS AFFECTED:





END OF ALERT