

Date: 10/27/2022

Alert No. 064

CONSTRUCTION ALERT

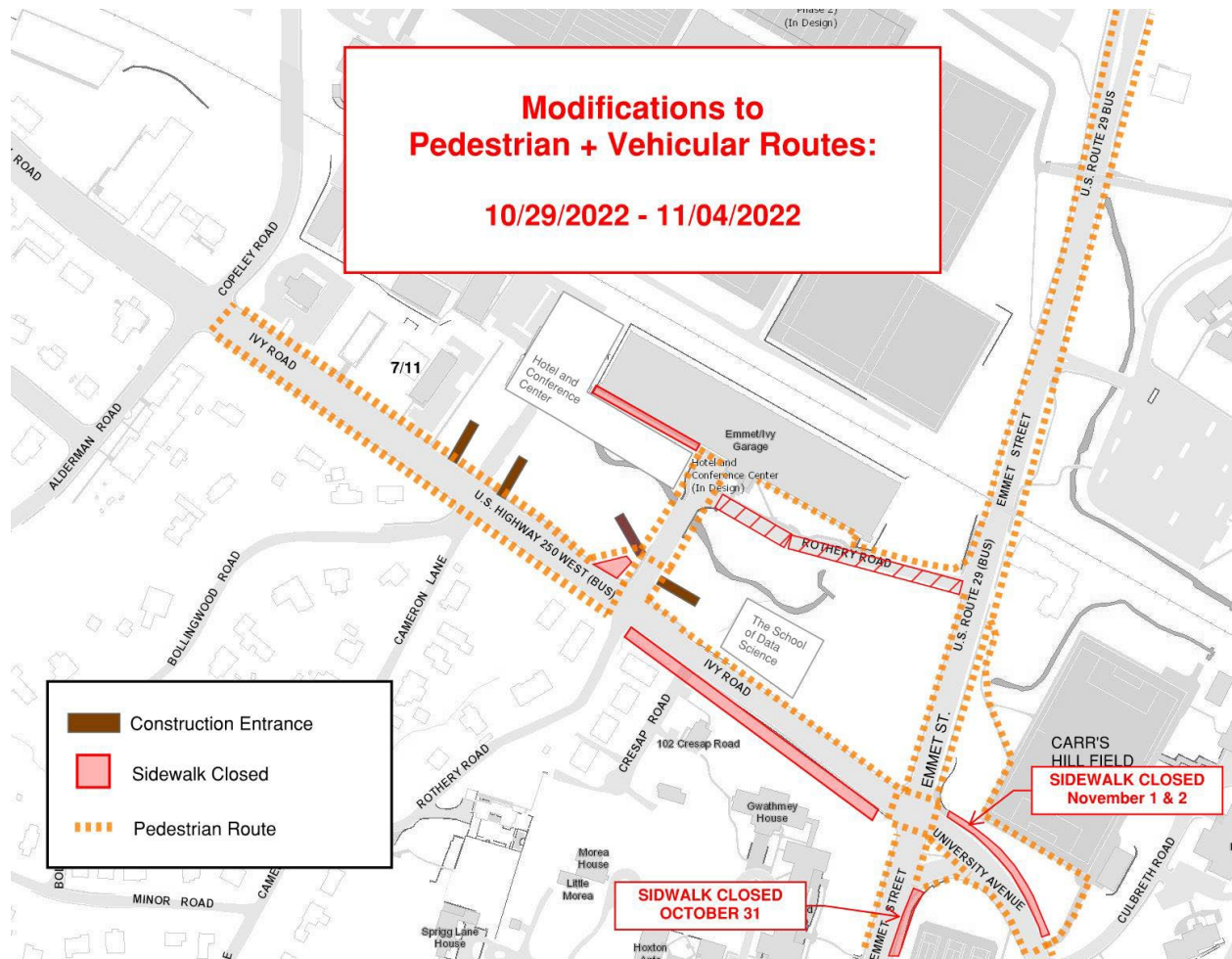
Emmet-Ivy Corridor Public Realm Project Saturday, October 29th – Friday, November 4th

WHAT'S THE LATEST CHANGE?

- **Pedestrians:** The sidewalk on the east side of Emmet St. south of the pork chop is closed on Monday, October 31st due to the undergrounding of utilities. See map.
- **Pedestrians:** The sidewalk on the north side of University Ave from the Emmet-Ivy intersection to the Carr's Hill Field access road is closed on Tuesday, November 1st and 2nd due to the undergrounding of utilities. See map.

PEDESTRIANS:

- **Pedestrians:** The Emmet-Ivy garage west stair tower is open, but the sidewalk along the southwest side of the garage is closed. Signage will guide pedestrians to enter/exit the west stair tower through the garage. The sidewalk will be accessible during an emergency.
- **Pedestrians:** A new construction entrance is created south of the Rothery Rd. bridge. Construction trucks and traffic will cross over the sidewalk into the site. Flaggers will be assisting with pedestrian and vehicular traffic.
- **Pedestrians:** The sidewalk along the north side of Ivy Rd. is closed at the intersection of Rothery Rd and Ivy Rd. due to the temporarily disabled crosswalk signal and ongoing construction.
- **Pedestrians:** The sidewalk along the south side of Ivy Rd. is closed.



ISSUED BY:

- Chris Hoy, Construction Administration Manager -UVA FM CC&R, cjh6t@virginia.edu 434.962.5326
- Nat Perkins, Project Manager - UVA Foundation, nperkins@uvafoundation.com , 434.531.7387
- Megan Buschi - Project Coordinator - UVA FM CC&R, jsg5fr@virginia.edu 434.400.8594